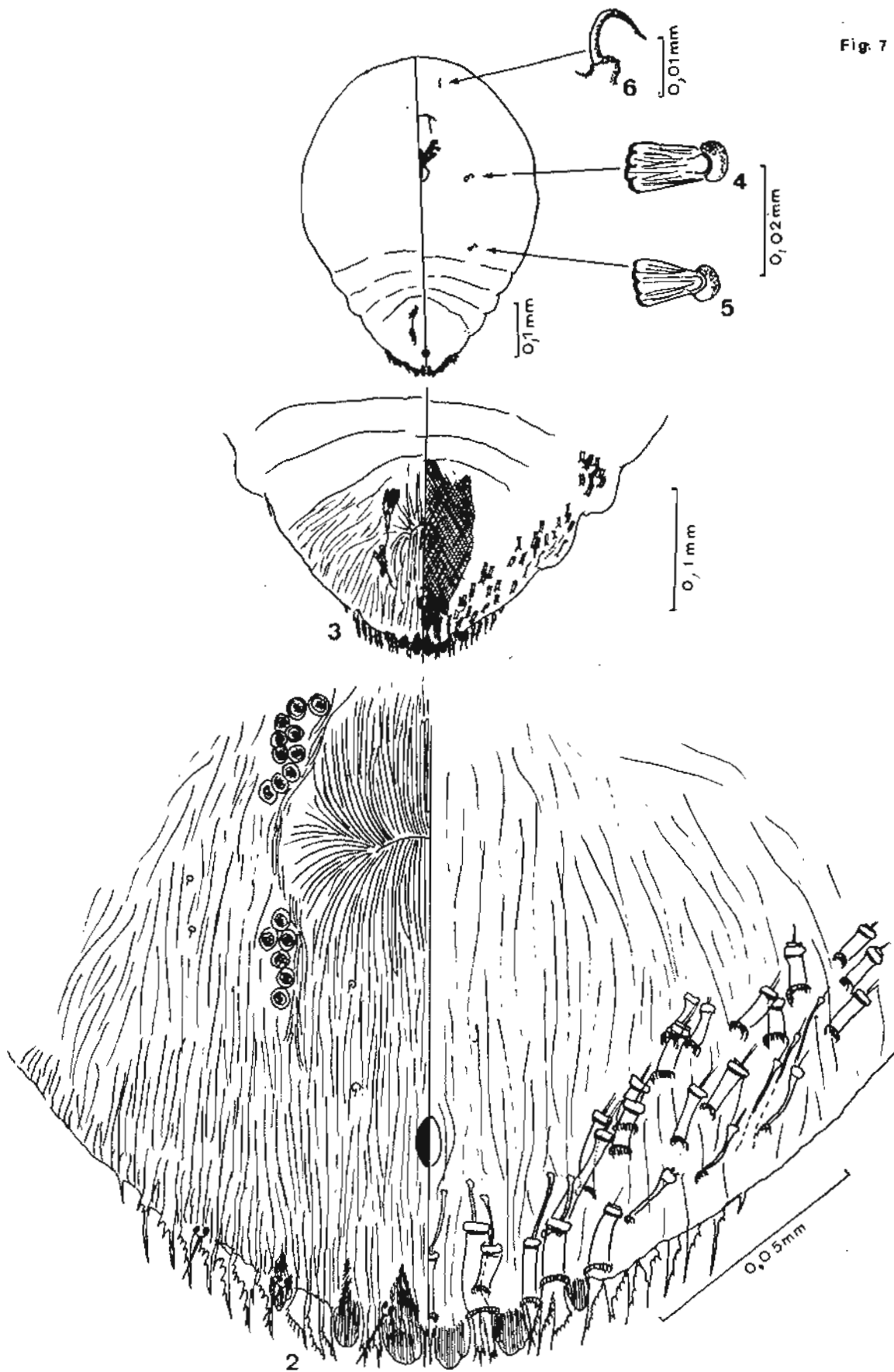
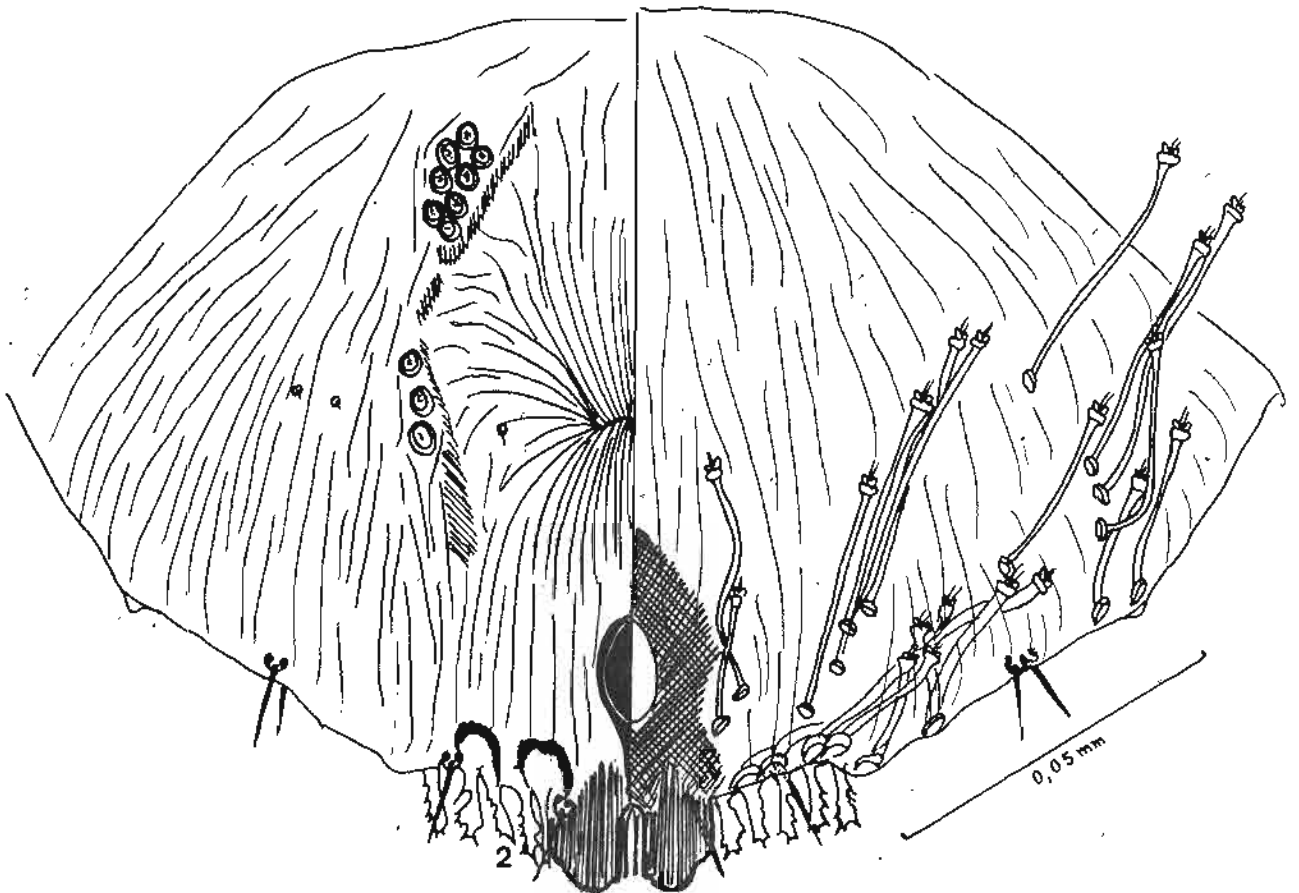
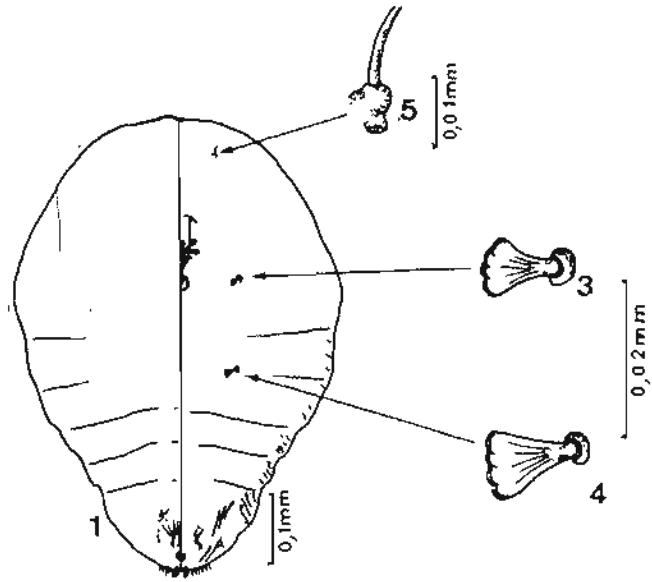


Quadraspidiotus pyri Lichtenstein
 1. forme générale, 2. pygidium, 3. stigmatum
 antérieur, 4. stigmatum postérieur, 5. antenne



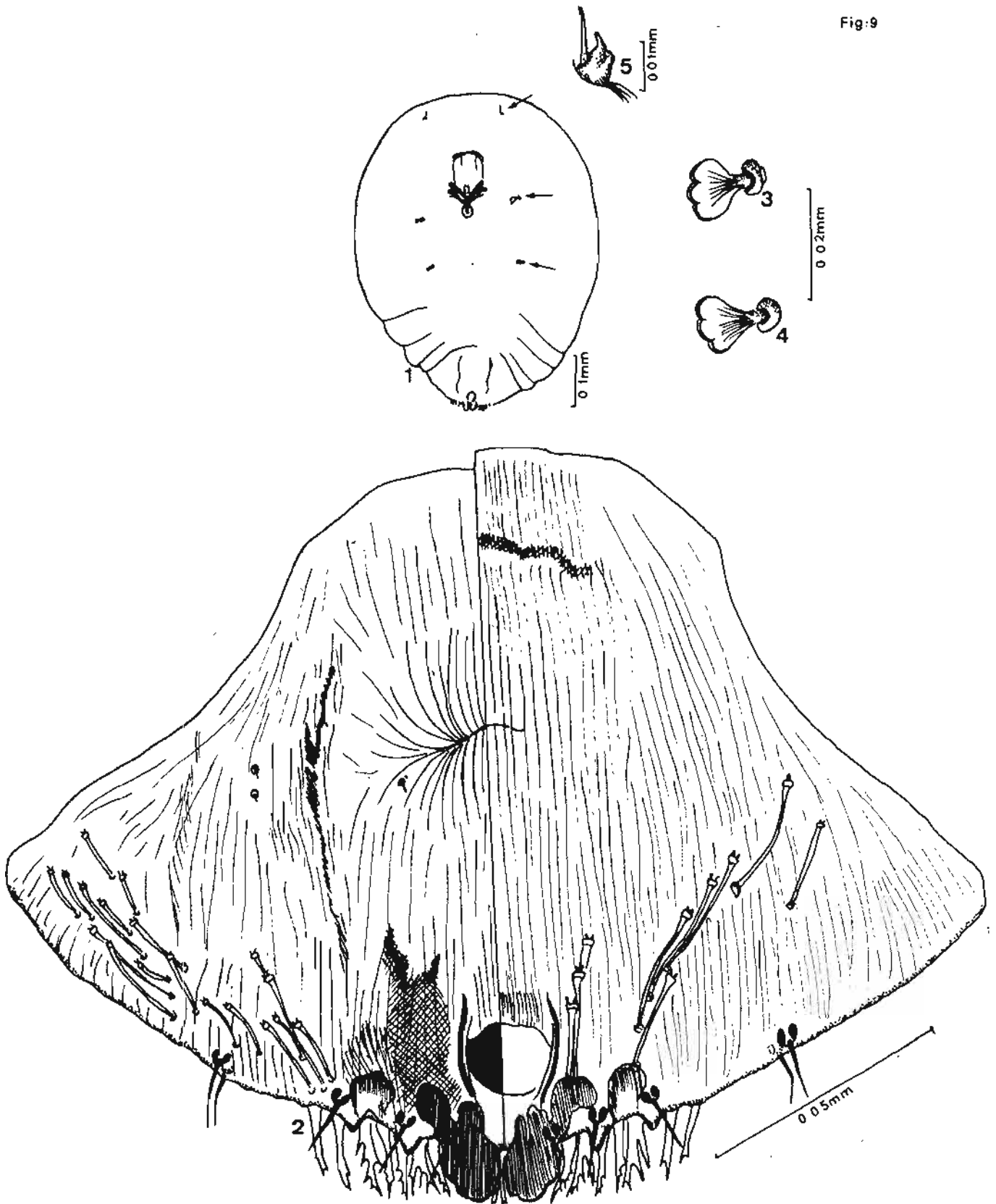
Aspidiotus hederae Vallot

1 forme générale, 2. pygidium, 3. extrémité abdominale.
 4. stigmate antérieur, 5. stigmate postérieur, 6. antenne.



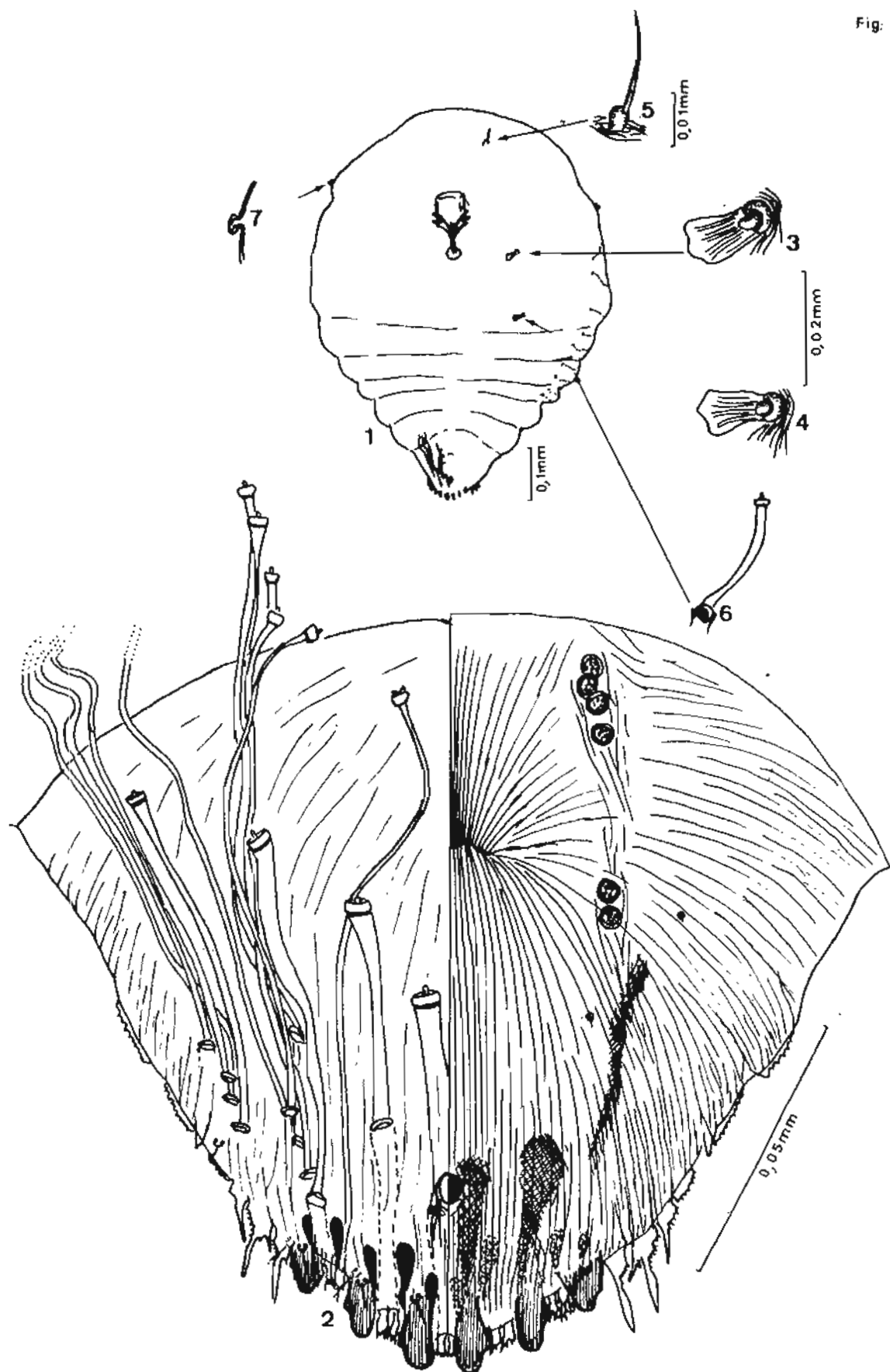
Hemiberlesia latanige Signoret

1. forme générale., 2. pygidium, 3. stigmate antérieur.,
4. stigmate postérieur, 5. antenne



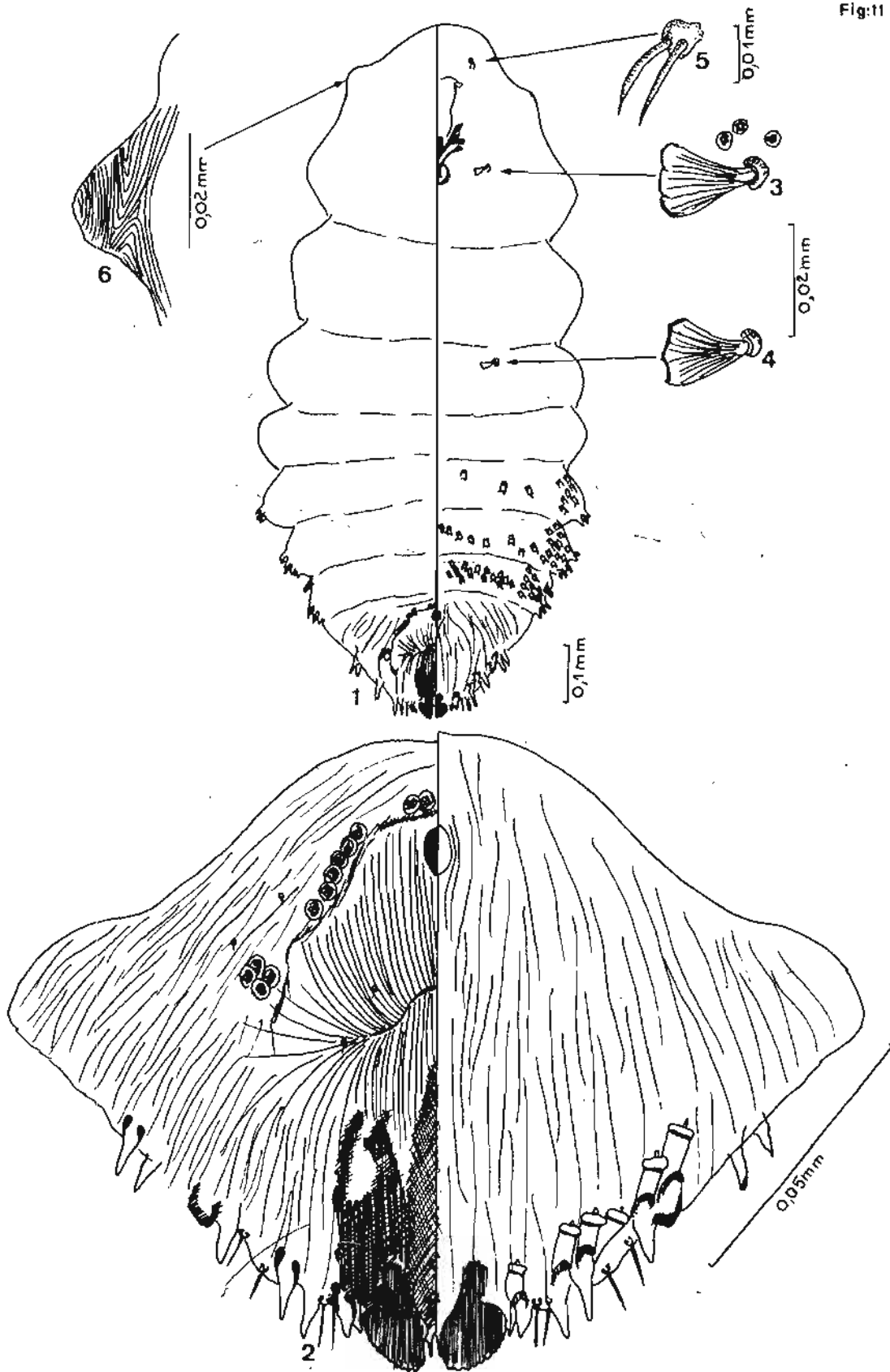
Hemiberlesia rapax Comstock

1. forme generale, 2. pygidium, 3. stigmate anterieur.,
4. stigmate posterieur, 5. antenne.



Chrysomphalus dictyospermi Morgan

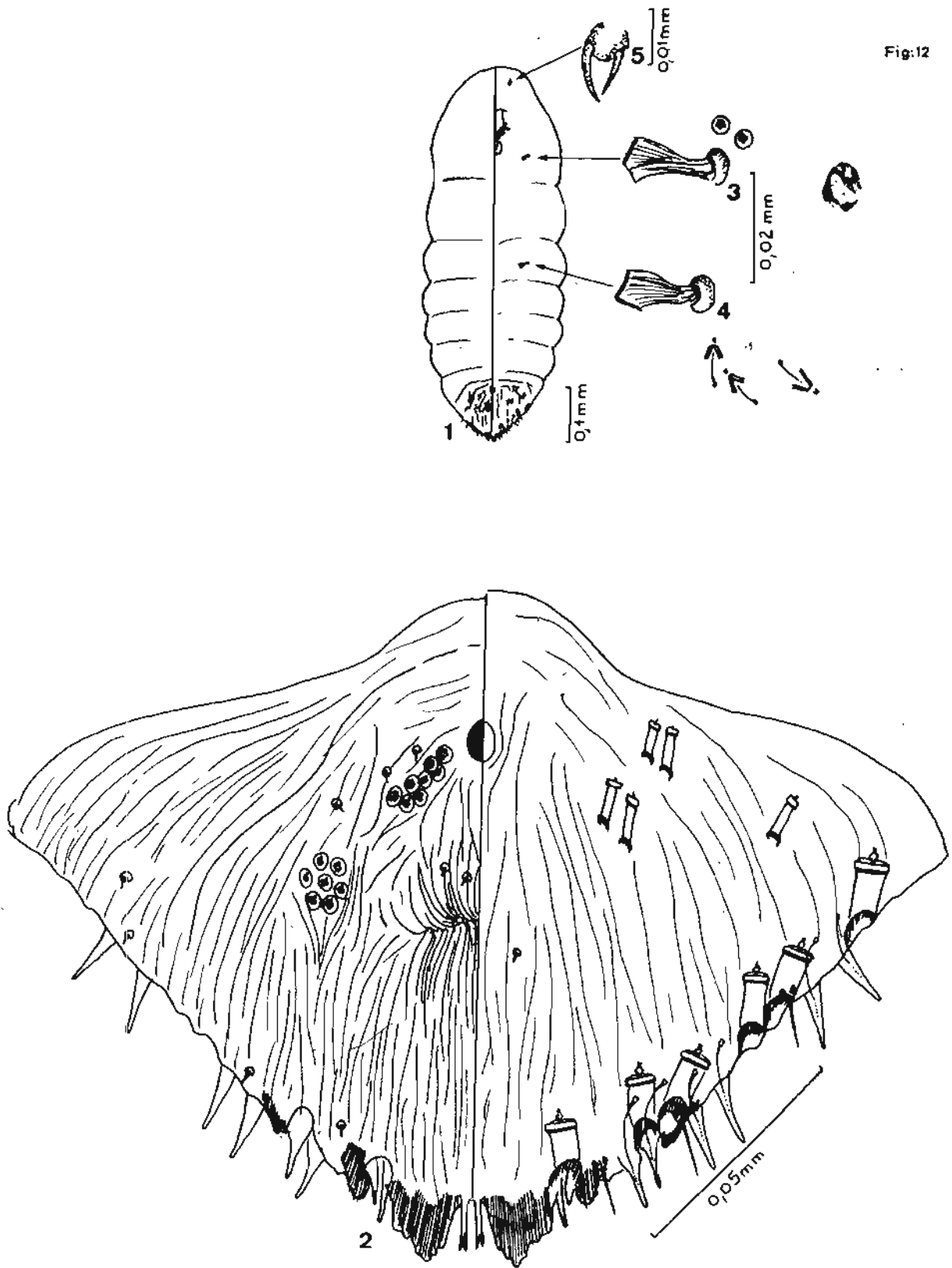
1. forme générale, 2. pygidium, 3. stigmatte antérieur,
 4. stigmatte postérieur, 5. antenne, 6. glande microtubulaire
 7. tubercule thoracique



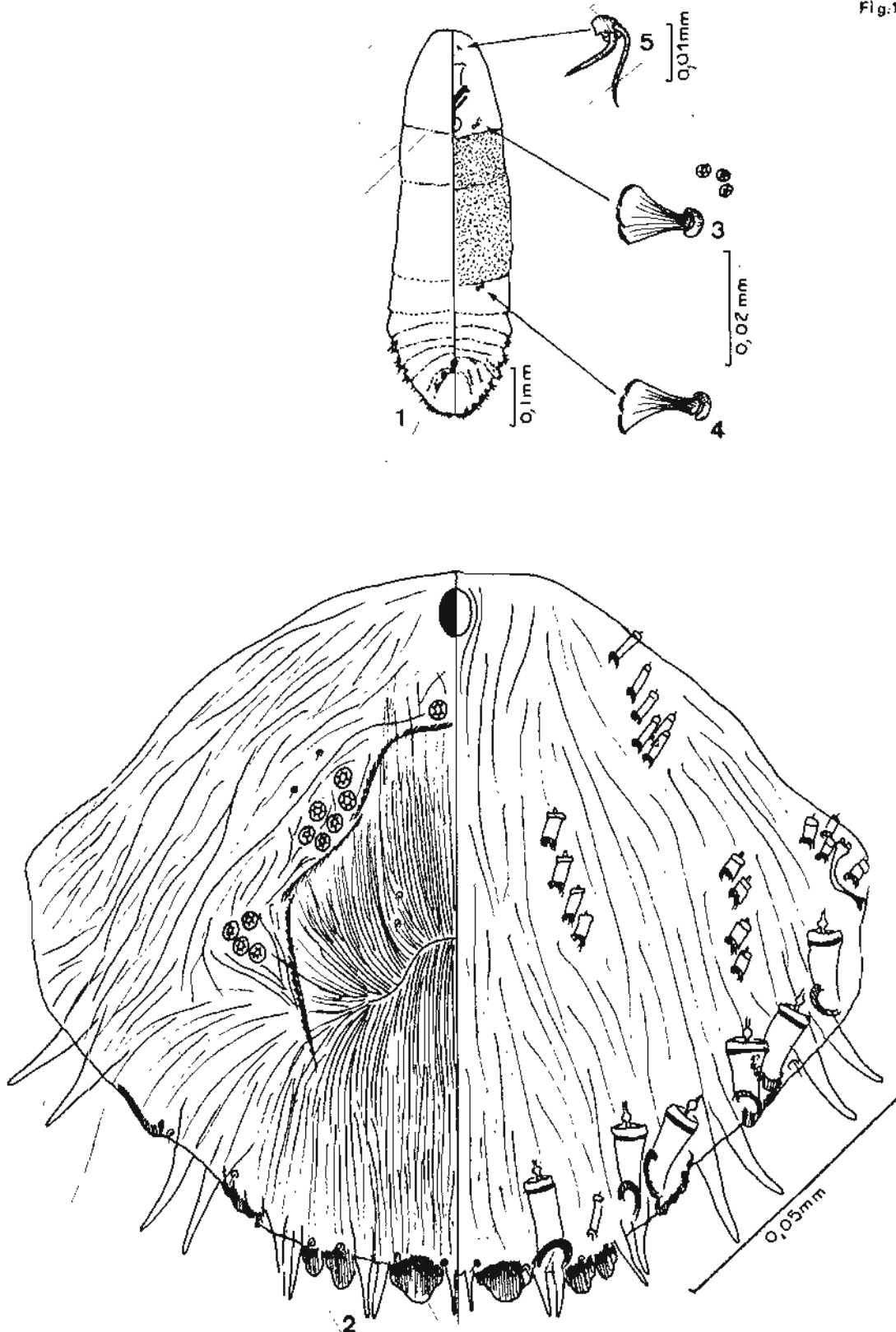
Andaspis hawaiiensis Maskell

1. forme générale., 2. pygidium., 3. stigmaté antérieur.,
 4. stigmaté postérieur., 5. antenne. 6. tubercule

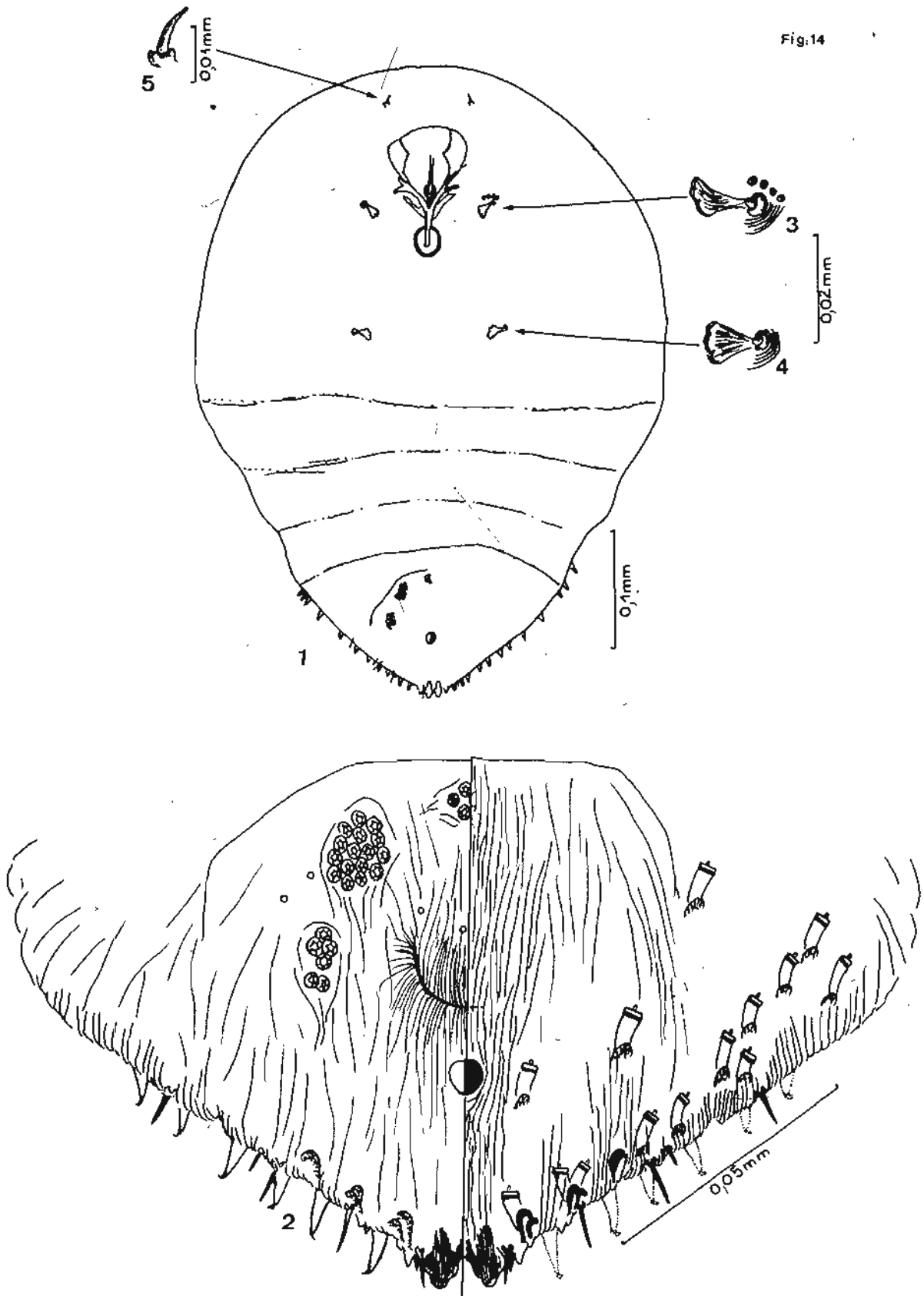
Fig:12



Lepidosaphes destefanii Leonardi
1. forme générale, 2. pygidium, 3. stigmatum antérieur,
4. stigmatum postérieur, 5. antenne



Lepidosaphes conchyformis forma *minima* Newstead
 1. forme générale., 2. pygidium., 3 stigmatum antérieur.
 4. stigmatum postérieur., 5. antenne.



Epidiaspis leperii Signoret

1. forme générale. 2. id., pygidium. 3. stigmatum antérieur.
4. stigmatum postérieur. 5. antenne.

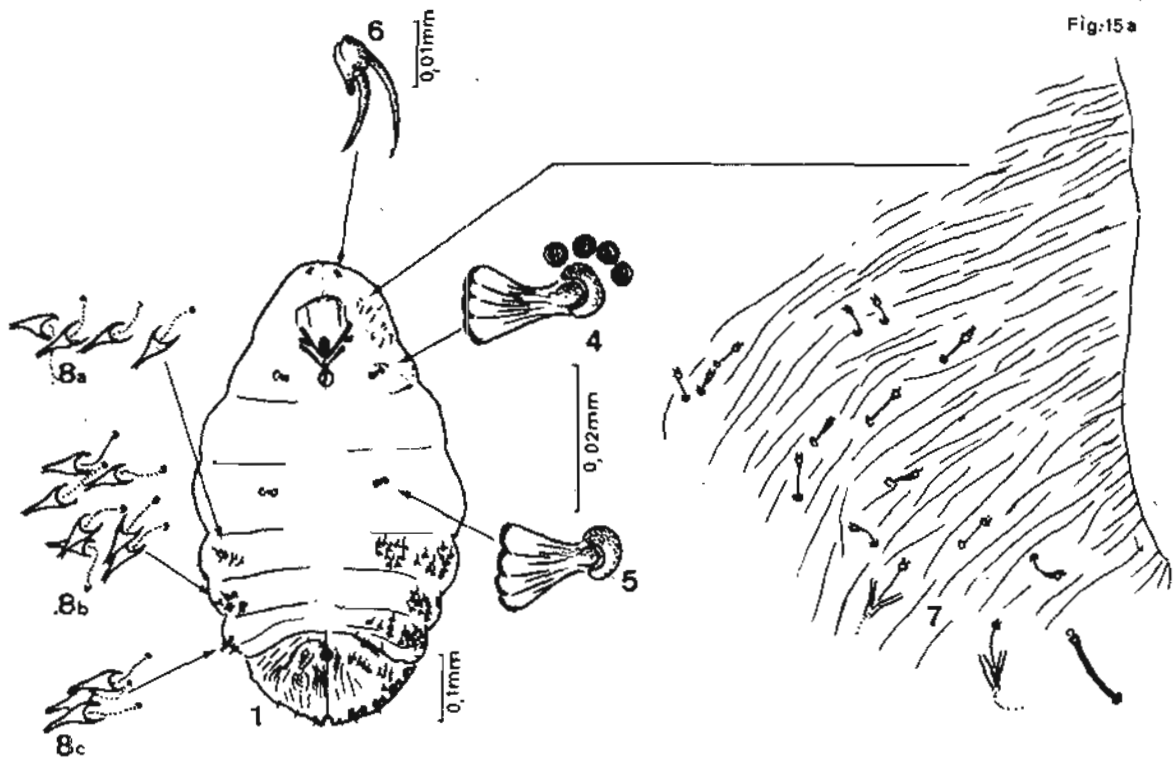
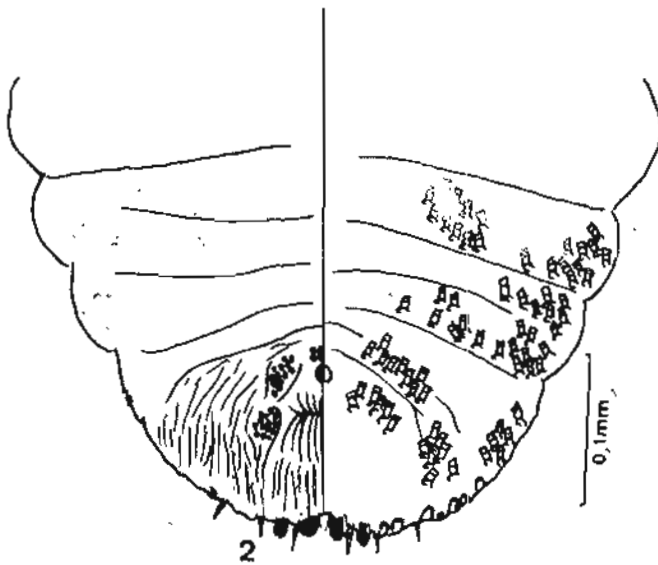
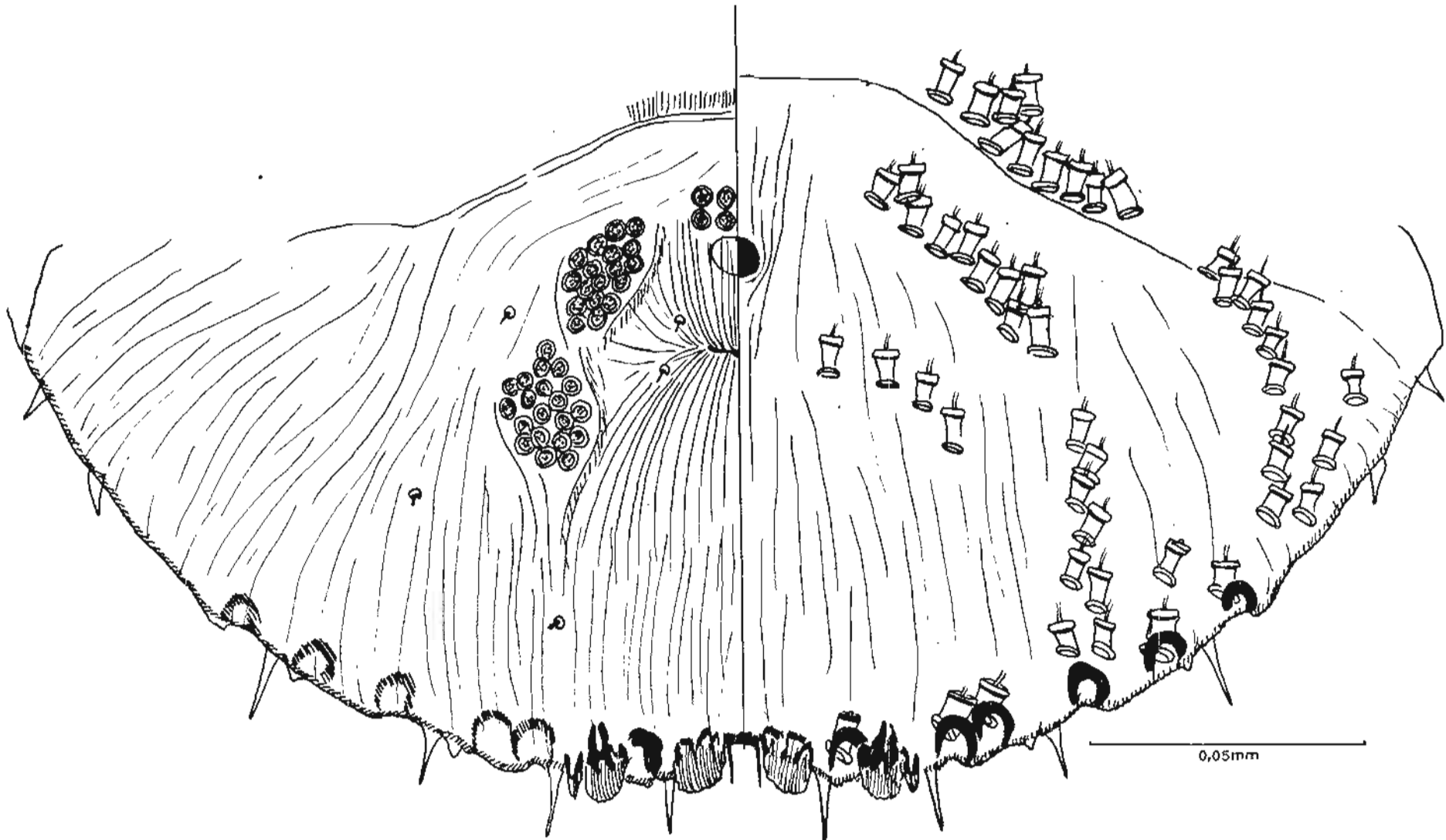


Fig:15a



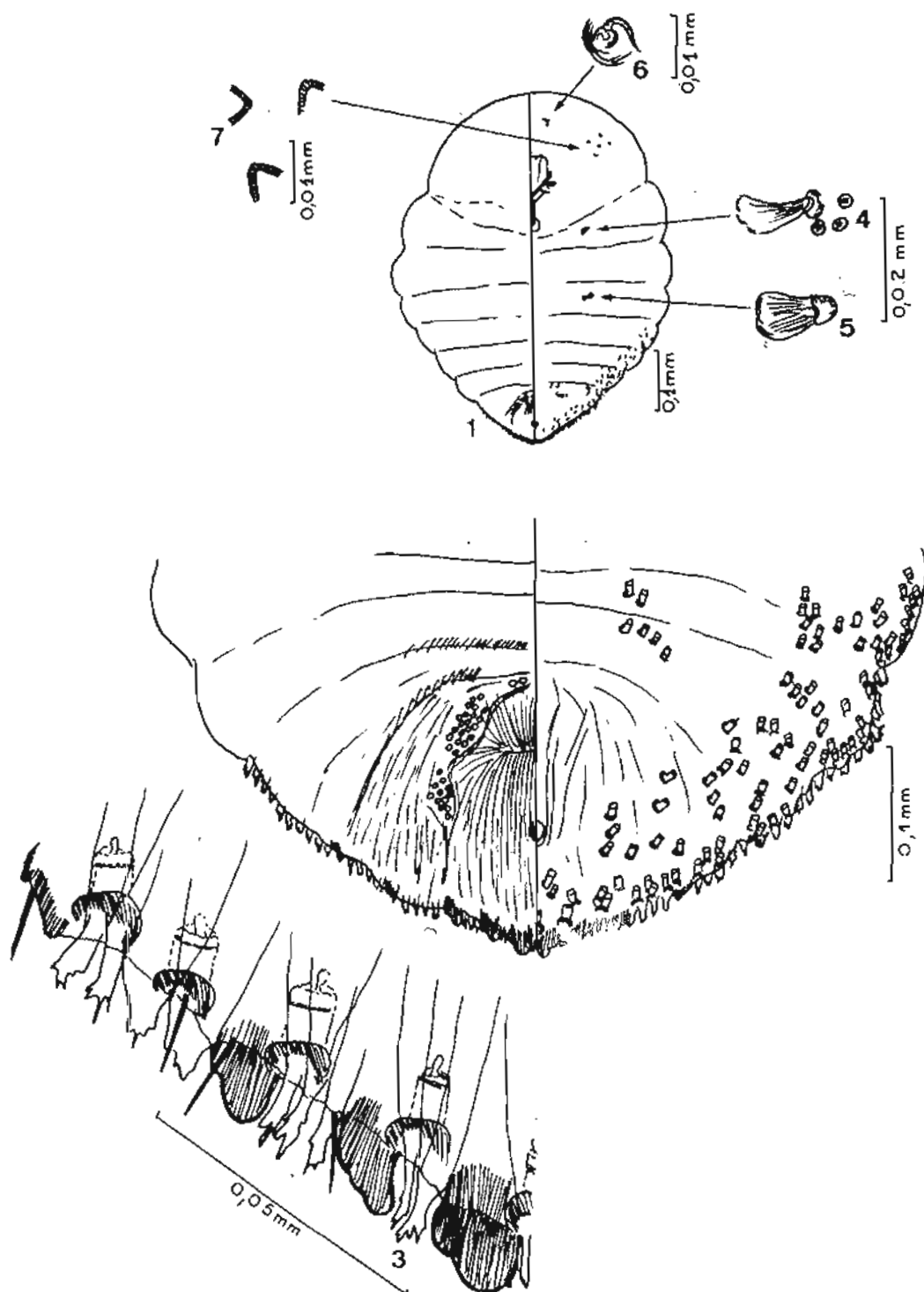
Chionaspis bupleuri otae Balachowsky

1. forme générale, 2. pygidium, 3. ornementation du pygidium.
 4. stigmatum antérieur, 5. stigmatum postérieur, 6. antenne, 7. partie latérale
 du prosoma, 8(a,b&c). tubercules glandulaires ventraux.



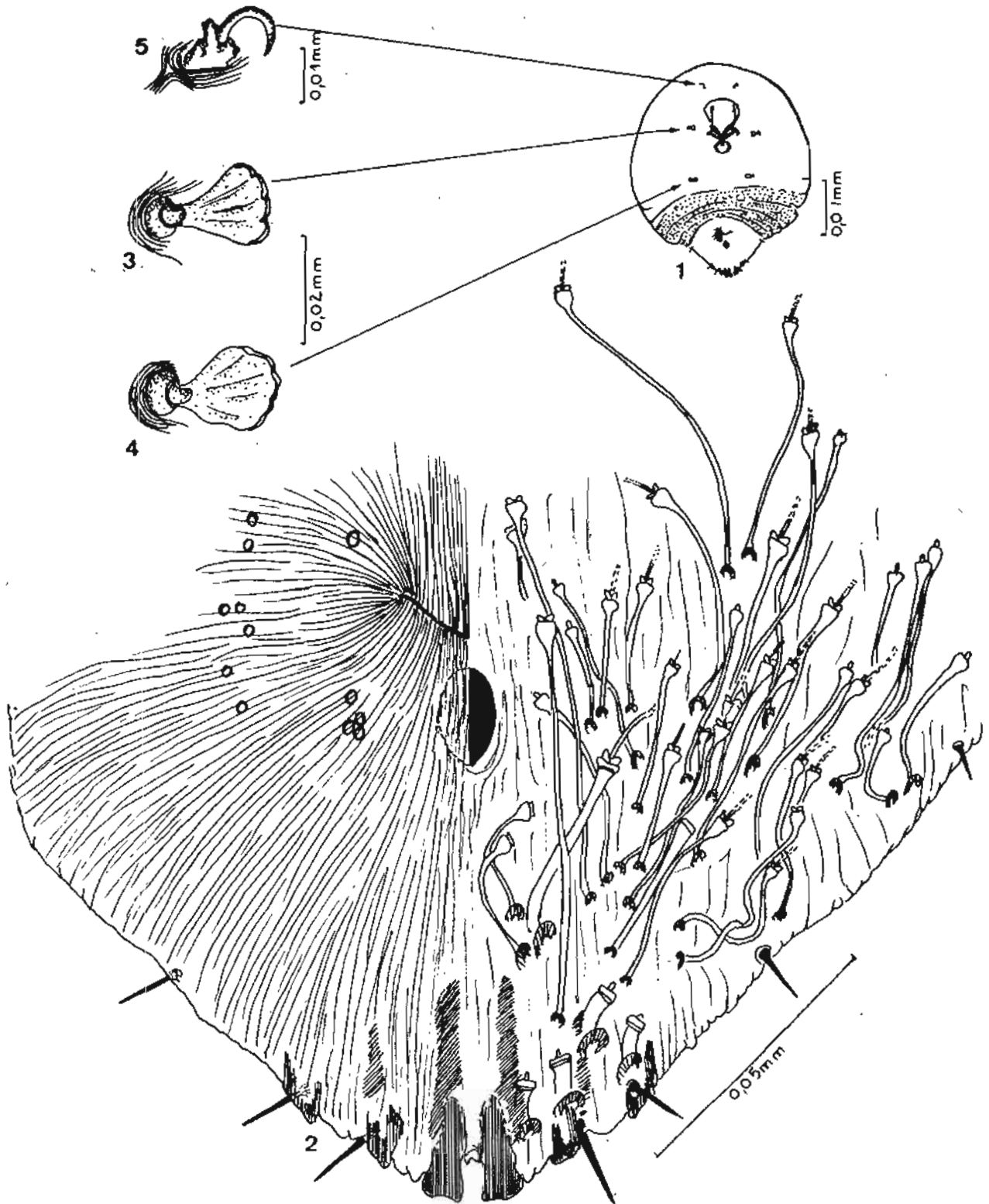
Pygidium de Chionaspis bupleuri oleae Balachowsky

Fig 16



Pariatoria oleae Colvée

1. forme générale, 2. pygidium, 3. ornementation marginale du pygidium, 4. stigmate antérieur, 5. stigmate postérieur, 6. antenne



Saharaspis ceardi Balachowsky

1. forme générale., 2. Id. pygidium., 3. stigmaté antérieur
4. stigmaté postérieur., 5. antenne